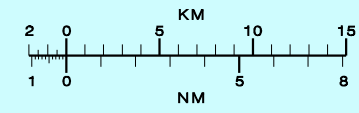
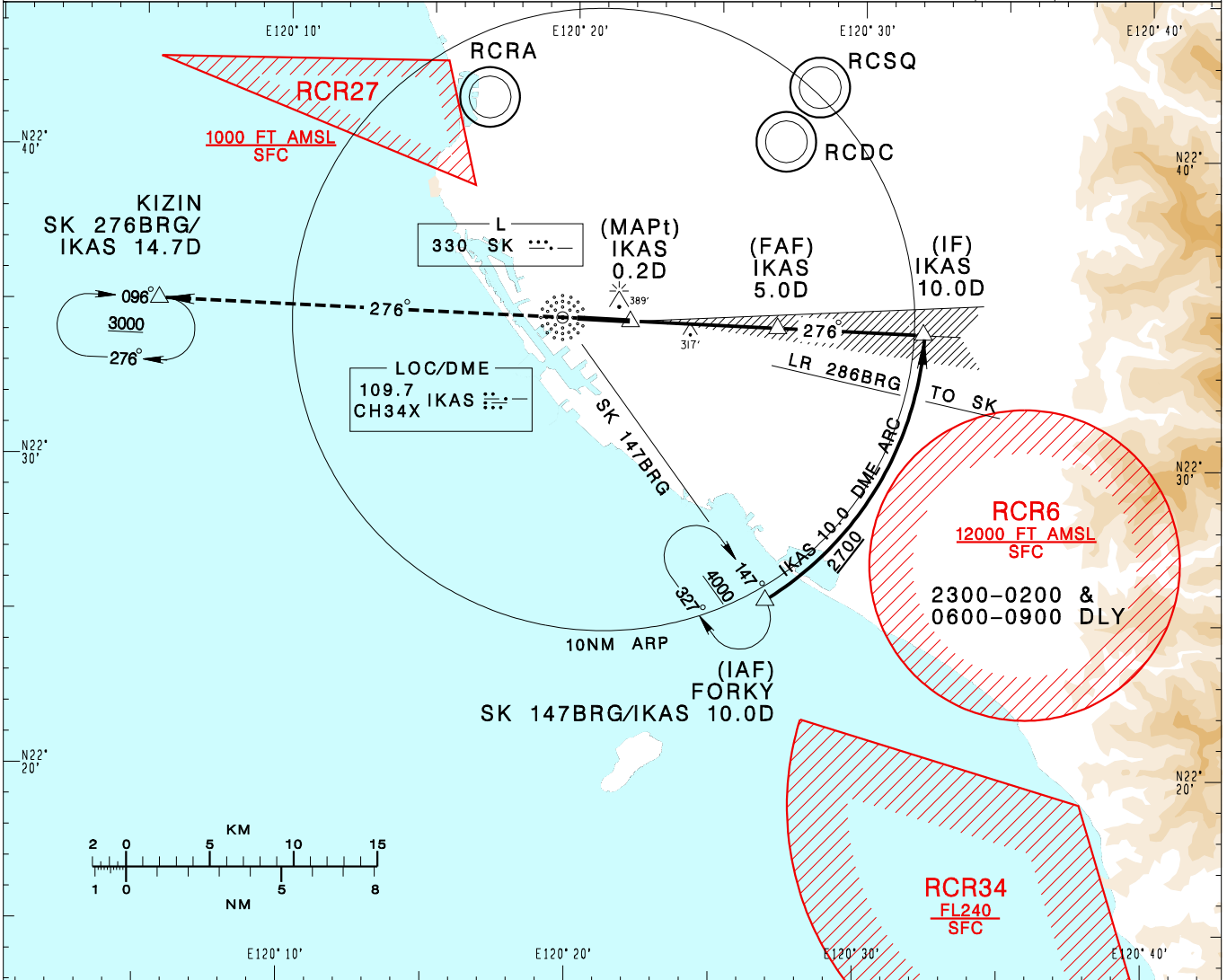


# 高雄國際機場

## KAOHSIUNG INTL AD

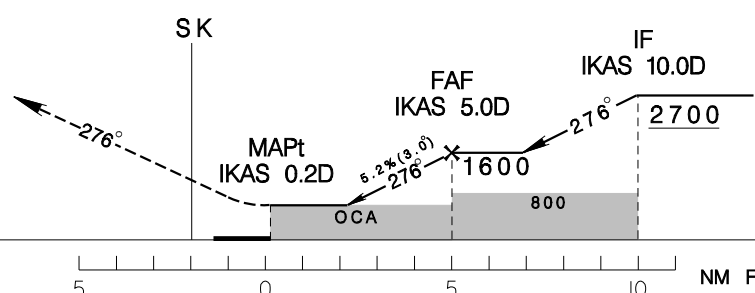
RCKH  
LOC RWY27

KAOHSIUNG APP 124.7 125.7	KAOHSIUNG TWR 118.7 120.7	ATIS 127.8	<p>VAR 4° W</p> <p>MSA SK 25NM</p>	
Apt Elev: 32'	Rwy27 DTHR Elev: 31'	Trans Level: FL130		Trans Alt: 11,000'
BEARINGS ARE MAGNETIC; DISTANCES ARE NAUTICAL MILES; ELEVATIONS, HEIGHTS IN FEET				



DIST to IKAS	2DME	3DME	4DME	5DME
ADVISORY ALT	660	980	1300	1600

MISSED APCH:  
CLIMB DIRECT TO SK, THEN  
TRACK SK 276BRG TO KIZIN,  
CLIMB TO 3000 AND HOLD.



MINIMA (OCA IN FT, VIS IN M, OCH IN FT)					<p>NOTE</p> <p>1. CIRCLING NOT AUTHORIZED.</p> <p>2. THE INITIAL APCH ARC INFRINGES RCR-6 AREA, PRIOR COORDINATION WITH ROCAF WILL BE COMPLETED BY ATC BEFORE ISSUING CLEARANCE DURING RCR-6 ACTIVE HOURS.</p> <p>* DME REQUIRED</p>
CATEGORY	A	B	C	D	
STRAIGHT IN	640/800 RVR750	608	640/2100	608	
STRAIGHT IN (ALS OUT)	640/1600	608	640/2800	608	

CHANGES: NEW PAGE NUMBER, UPDATE RESTRICTED AREA VERTICAL LIMITS REPRESENTATION